

# Charlotte-Mecklenburg Schools 2009-2010

## Preliminary Assessment Results



# End-of-Grade (EOG) Preliminary Assessment Results



2009-2010



## Later release

- Less shifting of data
- Still preliminary but closer to the final official results
- Some historic numbers have changed
- Changed from the preliminary numbers reported (June numbers) to final official numbers
- The picture is a bit different using the official numbers from history



Later Release Date

# Goal 1: High Academic Achievement

## Objectives:

- Ninety-five percent of students will achieve at or above standard on Reading End-of-Grade (EOG) tests in grades three through eight.
- Eighty-eight percent of students will achieve at or above standard on Mathematics End-of-Grade (EOG) tests in grades three through eight.
- Eighty percent of students will achieve at or above standard on Science End-of-Grade (EOG) tests in grades five and eight.



Strategic Plan 2010

## Reading and Mathematics EOGs

- Grades 3 through 8
- 3 test sessions (2 math, 1 reading)
- 62,643 CMS students tested
- 124,977 tests given; 36,860 retests given
  - 3<sup>rd</sup> year for reading edition
  - 5<sup>th</sup> year for math edition

## Science EOG

- Grades 5 and 8
- 20,186 tests given; 7,386 retests given
  - 3<sup>rd</sup> year for science edition

## 4 Levels of Achievement

- Level III – grade level/at standard
- Level IV – above grade level/above standard



## EOGs

- Proficiency has increased in each grade, even without retests.
- Retests increased pass rates.

## Achievement gap

- Ethnic gaps narrowed in math, reading and science.
- Economic Gap widened in both reading and math.



2010 End-of-Grade Results

Math Proficiency*	2005-06	2006-07	2007-08	2008-09	2009-10	Change
Grade 3	70	70	70	72	75	+5
Grade 4	67	69	71	74	76	+9
Grade 5	68	69	72	74	76	+8
Grade 6	62	62	65	68	72	+10
Grade 7	58	60	64	68	71	+13
Grade 8	62	63	65	72	78	+16
<b>Composite</b>	<b>64</b>	<b>65</b>	<b>68</b>	<b>72</b>	<b>75</b>	<b>+11</b>

Over the past 4 years, CMS has increased proficiency at each grade level by between 5 and 16 percentage points.

\*Percentage of scores at Levels III and IV

# Math Proficiency (without retests)

Math Proficiency*	2008-09	2009-10	Change
Grade 3	80	82	+2
Grade 4	80	83	+3
Grade 5	81	83	+2
Grade 6	76	79	+3
Grade 7	75	79	+4
Grade 8	80	84	+4
<b>Composite</b>	<b>79</b>	<b>82</b>	<b>+3</b>

Comparing retested numbers to retested numbers, CMS has increased proficiency at each grade level by between 2 and 5 percentage points over the past year.

\*Percentage of scores at Levels III and IV

# Math Proficiency (with retests)



# 2009-10 Math Proficiency (without retests)



Grade	Percent Proficient (Achievement Levels III or IV)					
	Econ. Disadvan.	Not Econ. Disadvan.	African-American	Hispanic	Asian	White
3	64	89	62	72	86	91
4	66	89	63	73	87	92
5	65	90	64	71	84	92
6	59	87	57	66	86	91
7	59	86	58	67	85	89
8	68	89	67	72	88	93
<b>Composite</b>	<b>64</b>	<b>88</b>	<b>62</b>	<b>70</b>	<b>86</b>	<b>92</b>



## Trends within Subgroups

# 2009-10 Math Proficiency (with retests)



Grade	Percent Proficient (Achievement Levels III or IV)					
	Econ. Disadvan.	Not Econ. Disadvan.	African-American	Hispanic	Asian	White
3	74	93	71	80	90	95
4	74	93	72	81	90	95
5	74	93	73	79	89	95
6	68	92	67	74	90	95
7	69	91	68	77	87	93
8	77	93	76	80	92	>95
<b>Composite</b>	<b>73</b>	<b>92</b>	<b>71</b>	<b>79</b>	<b>90</b>	<b>95</b>



## Trends within Subgroups

Year	African-American vs. White		Hispanic vs. White		Economically Disadvantaged vs. Not Economically Disadvantaged Students	
	Gap	Gap Trend	Gap	Gap Trend	Gap	Gap Trend
2005-06*	39	n/a	30	n/a	34	n/a
2006-07	38	-1	30	0	32	-2
2007-08	37	-1	29	-1	32	0
2008-09 (without retests)	33	-4	24	-5	23	-9
2008-09 (with retests)	27	-10	19	-10	19	-13
2009-10 (without retests)	30	-3	21	-3	25	+2
2009-10 (with retests)	24	-3	16	-3	20	+1

CMS ethnic gaps have narrowed consistently.

\*Mathematics for 2005-06 reflects the state adjustment of minimum proficiency standards.

# Math Gap Trends Grades 3-8 (overall)



Year	African-American vs. White		Hispanic vs. White		Economically Disadvantaged vs. Not Economically Disadvantaged Students	
	Gap	Gap Trend	Gap	Gap Trend	Gap	Gap Trend
2005-06*	39	n/a	30	n/a	34	n/a
2009-10	30	-9	21	-9	25	-9

CMS gaps have narrowed consistently.

\*Mathematics for 2005-06 reflects the state adjustment of minimum proficiency standards.

# Math Gap Trends Grades 3-8 (without retests)



# Schools Meeting Strategic Plan 2010 EOG Math Goals (Math - 88%)

Alexander Graham MS	Community House MS	Hawk Ridge ES	Mountain Island ES	Sharon ES
Bailey MS	Cornelius ES	Highland Creek ES	Myers Park Traditional ES	Smith Language Academy
Bain ES	Crestdale MS	Highland Mills ES	Olde Providence ES	South Charlotte MS
Ballantyne ES	Crown Point ES	Huntersville ES	Park Road ES	Torrence Creek ES
Barnette ES	Davidson ES	J. V. Washam ES	Piedmont Open MS	Villa Heights ES
Beverly Woods ES	Davidson IB MS	Jay M. Robinson MS	Polo Ridge ES	Winget Park ES
Carmel MS	Elizabeth Lane ES	Matthews ES	Providence Spring ES	
Chantilly ES	Elizabeth Traditional ES	McKee Road ES	Randolph MS	
Clear Creek ES	Elon Park ES	Mint Hill MS	River Gate ES	
Collingswood ES	Endhaven ES	Morehead ES	Selwyn ES	



## 2010 End-of-Grade Results (with retests)

Reading Proficiency*	2007-08	2008-09	2009-10	Change
Grade 3	56	58	59	+3
Grade 4	60	62	63	+3
Grade 5	57	60	63	+6
Grade 6	58	62	66	+8
Grade 7	49	54	57	+8
Grade 8	51	57	61	+10
<b>Composite</b>	<b>55</b>	<b>59</b>	<b>62</b>	<b>+7</b>

Since the test standards were raised in 2007-08, CMS has increased proficiency at each grade level by between 3 and 10 percentage points.

\*Percentage of scores at Levels III and IV

# Reading Proficiency (without retests)

Reading Proficiency*	2008-09	2009-10	Change
Grade 3	66	68	+2
Grade 4	70	71	+1
Grade 5	69	72	+3
Grade 6	70	74	+4
Grade 7	63	66	+3
Grade 8	66	69	+3
<b>Composite</b>	<b>67</b>	<b>70</b>	<b>+3</b>

Comparing retested numbers to retested numbers, CMS has increased proficiency at each grade level by between 1 and 4 percentage points over the past year.

\*Percentage of scores at Levels III and IV

# Reading Proficiency (with retests)

# 2009-10 Reading Proficiency (without retests)



Grade	Percent Proficient (Achievement Levels III or IV)					
	Econ. Disadvan.	Not Econ. Disadvan.	African-American	Hispanic	Asian	White
3	43	79	45	43	70	83
4	48	82	48	49	74	85
5	47	83	50	48	70	86
6	52	84	52	56	75	88
7	41	76	41	47	66	81
8	44	81	46	47	67	85
<b>Composite</b>	<b>46</b>	<b>81</b>	<b>47</b>	<b>48</b>	<b>70</b>	<b>85</b>

## Trends within Subgroups



# 2009-10 Reading Proficiency (with retests)



Grade	Percent Proficient (Achievement Levels III or IV)					
	Econ. Disadvan.	Not Econ. Disadvan.	African-American	Hispanic	Asian	White
3	53	86	55	53	77	89
4	57	88	58	59	78	90
5	59	89	61	59	75	91
6	62	90	63	65	81	92
7	51	84	51	57	71	88
8	54	86	55	56	74	90
<b>Composite</b>	<b>56</b>	<b>87</b>	<b>57</b>	<b>58</b>	<b>76</b>	<b>90</b>

## Trends within Subgroups

Year	African-American vs. White		Hispanic vs. White		Economically Disadvantaged vs. Not Economically Disadvantaged Students	
	Gap	Gap Trend	Gap	Gap Trend	Gap	Gap Trend
2007-08*	41	n/a	39	n/a	37	n/a
2008-09 (without retests)	40	-1	38	-1	30	-7
2008-09 (with retests)	35	-6	34	-5	27	-10
2009-10 (without retests)	38	-2	37	-1	35	+5
2009-10 (with retests)	33	-2	32	-2	31	+4



CMS ethnic gaps have narrowed consistently.

\*Reading for 2007-08 reflects the state adjustment of minimum proficiency standards.

# Reading Gap Trends Grades 3-8 (overall)

Year	African-American vs. White		Hispanic vs. White		Economically Disadvantaged vs. Not Economically Disadvantaged Students	
	Gap	Gap Trend	Gap	Gap Trend	Gap	Gap Trend
2007-08*	41	n/a	39	n/a	37	n/a
2009-10	38	-3	37	-2	35	-2



CMS gaps have narrowed consistently.

\*Reading for 2007-08 reflects the state adjustment of minimum proficiency standards.



# Reading Gap Trends Grades 3-8 (without retests)

# Schools Meeting Strategic Plan 2010 EOG Reading Goals (Reading - 95%)

Davidson IB MS
Elizabeth Lane ES
Hawk Ridge ES
Polo Ridge ES
Providence Spring ES



2010 End-of-Grade Results  
(with retests)

Science Proficiency*	2007-08	2008-09	2009-10	Change
Grade 5	40	50	58	+18
Grade 8	47	55	61	+14
Composite	43	52	60	+17



CMS has increased proficiency by between 14 and 18 percentage points since the tests were implemented 2 years ago.

\*Percentage of scores at Levels III and IV

# Science Proficiency (without retests)

Science Proficiency*	2008-09	2009-10	Change
Grade 5	60	69	+9
Grade 8	64	70	+6
Composite	62	69	+7



Comparing retested numbers to retested numbers, CMS has increased proficiency by between 6 and 9 percentage points over the past year.

\*Percentage of scores at Levels III and IV

# Science Proficiency (with retests)

# 2009-10 Science Proficiency (without retests)



Grade	Percent Proficient (Achievement Levels III or IV)					
	Econ. Disadvan.	Not Econ. Disadvan.	African-American	Hispanic	Asian	White
5	42	79	41	46	67	84
8	45	80	43	52	75	86
<b>Composite</b>	<b>43</b>	<b>80</b>	<b>42</b>	<b>49</b>	<b>71</b>	<b>85</b>



## Trends within Subgroups

# 2009-10 Science Proficiency (with retests)



Grade	Percent Proficient (Achievement Levels III or IV)					
	Econ. Disadvan.	Not Econ. Disadvan.	African-American	Hispanic	Asian	White
5	55	87	54	59	74	91
8	55	87	54	63	81	92
<b>Composite</b>	<b>55</b>	<b>87</b>	<b>54</b>	<b>61</b>	<b>77</b>	<b>91</b>



## Trends within Subgroups



Year	African-American vs. White		Hispanic vs. White		Economically Disadvantaged vs. Not Economically Disadvantaged Students	
	Gap	Gap Trend	Gap	Gap Trend	Gap	Gap Trend
2007-08	47	n/a	41	n/a	38	n/a
2008-09 (without retests)	45	-2	38	-3	33	-5
2008-09 (with retests)	42	-5	35	-6	32	-6
2009-10 (without retests)	43	-2	37	-1	36	+3
2009-10 (with retests)	37	-5	31	-4	32	0

CMS ethnic gaps have narrowed consistently.

# Science Gap Trends Grades 5 and 8 (overall)



Year	African-American vs. White		Hispanic vs. White		Economically Disadvantaged vs. Not Economically Disadvantaged Students	
	Gap	Gap Trend	Gap	Gap Trend	Gap	Gap Trend
2007-08	47	n/a	41	n/a	38	n/a
2009-10	43	-4	37	-4	36	-2



CMS gaps have narrowed consistently.

# Science Gap Trends Grades 5 and 8 (without retests)

# Schools Meeting Strategic Plan 2010 EOG Science Goals (Science - 80%)

Bailey MS	Cornelius ES	Endhaven ES	Mountain Island ES	Sharon ES
Bain ES	Crestdale MS	Hawk Ridge ES	Myers Park Traditional ES	Smith Language Academy
Ballantyne ES	Crown Point ES	Huntersville ES	Olde Providence ES	Torrence Creek ES
Barnette ES	Davidson ES	Jay M. Robinson MS	Park Road ES	Villa Heights ES
Beverly Woods ES	Davidson IB MS	J. V. Washam ES	Piedmont Open MS	
Carmel MS	Devonshire ES	Matthews ES	Polo Ridge ES	
Chantilly ES	Eastover ES	McAlpine ES	Providence Spring ES	
Clear Creek ES	Elizabeth Lane ES	McKee Road ES	Randolph MS	
Collingswood ES	Elizabeth Traditional ES	Mint Hill MS	South Charlotte MS	
Community House MS	Elon Park ES	Morehead ES	Selwyn ES	



## 2010 End-of-Grade Results (with retests)

There was some closing of the gap for most EOGs. The exception is with Economically Disadvantaged students.



Achievement Gap

# End-of-Course (EOC) Preliminary Assessment Results



2009-2010



# Goal 1: High Academic Achievement

## Objective:

- Eighty percent of students will achieve at or above standard on the EOC composite tests.



Strategic Plan 2010

# Administered at the end of certain Math, Science, English, and Social Studies courses

Algebra I\*

Algebra II

Biology\*

Civics & Economics\*

English I\*

Geometry

Physical Science

US History\*

\*Part of the high school exit standards

\*\*Chemistry and Physics were discontinued at the start of the 2009-10 school year.



# NC End-of-Course Assessments

Tests for the following EOC courses are counted in growth:

Algebra I

Biology

Civics & Economics

English I

US History



NC End-of-Course Assessments



- 59,904 tests given; 10,190 retests given
- 4 Levels of Achievement
  - Level III – grade level/at standard
  - Level IV – above grade level/above standard



NC End-of-Course Assessments

	2006-07	2007-08	2008-09	2009-10 (without retests)	2009-10 (with retests)	Change (without retests)
<b>Algebra I*</b>	72	71	79	82	87	<b>+10</b>
<b>Algebra II*</b>	62	67	76	78	85	<b>+16</b>
<b>Biology**</b>	63	72	78	78	84	<b>+15</b>
<b>Civics &amp; Economics*</b>	66	71	77	78	83	<b>+12</b>
<b>English I*</b>	71	74	76	80	85	<b>+9</b>
<b>Geometry*</b>	58	65	73	77	83	<b>+19</b>
<b>Physical Science**</b>	n/a	53	61	64	71	<b>+11</b>
<b>US History*</b>	71	74	79	84	89	<b>+13</b>
<b>Composite</b>	<b>67</b>	<b>70</b>	<b>76</b>	<b>79</b>	<b>85</b>	<b>+12</b>

\*Test standards were raised in 2006-07

\*\*Test standards were raised in 2007-08

Note: Chemistry and Physics were discontinued at the start of the 2009-10 school year



# End-of-Course Proficiency

	2007-08	2008-09	2009-10 (without retests)	2009-10 (with retests)	Change (without retests)
<b>Algebra I</b>	71	79	82	87	<b>+11</b>
<b>Biology</b>	72	78	78	84	<b>+6</b>
<b>Civics &amp; Economics</b>	71	77	78	83	<b>+7</b>
<b>English I</b>	74	76	80	85	<b>+6</b>
<b>US History</b>	74	79	84	89	<b>+10</b>



CMS increased proficiency in each area by between 6 and 11 percentage points (excluding retests) over the past 2 years.

# 2010 End-of-Course Proficiency “BIG FIVE”

# 2009-10 EOC Proficiency

	Percent Proficient (Achievement Levels III or IV)					
	Econ. Disadvan.	Not Econ. Disadvan.	African-American	Hispanic	Asian	White
Algebra I	72	90	71	79	91	94
Algebra II	72	83	69	78	87	88
Biology	69	87	69	72	85	93
Civics & Economics	67	87	68	70	83	92
English I	71	90	72	71	84	94
Geometry	68	84	65	75	90	90
Physical Science	59	72	59	62	71	79
US History	76	90	75	81	90	94
<b>Composite</b>	<b>70</b>	<b>87</b>	<b>70</b>	<b>74</b>	<b>87</b>	<b>92</b>



Trends within Subgroups  
(without retests)

# 2009-10 EOC Proficiency

	Percent Proficient (Achievement Levels III or IV)					
	Econ. Disadvan.	Not Econ. Disadvan.	African-American	Hispanic	Asian	White
<b>Algebra I</b>	79	93	78	85	93	>95
<b>Algebra II</b>	80	88	78	85	91	92
<b>Biology</b>	77	91	76	80	90	>95
<b>Civics &amp; Economics</b>	74	91	75	77	86	95
<b>English I</b>	77	93	79	77	88	95
<b>Geometry</b>	75	90	74	81	92	93
<b>Physical Science</b>	66	78	67	69	73	84
<b>US History</b>	83	93	82	85	94	>95
<b>Composite</b>	<b>77</b>	<b>91</b>	<b>77</b>	<b>80</b>	<b>90</b>	<b>95</b>



Trends within Subgroups  
(with retests)

# Algebra I

Year	African-American vs. White		Hispanic vs. White		Economically Disadvantaged vs. Not Economically Disadvantaged Students	
	Gap	Gap Trend	Gap	Gap Trend	Gap	Gap Trend
2006-07	35	n/a	27	n/a	24	n/a
2007-08	35	0	28	+1	21	-3
2008-09	24	-11	16	-12	15	-6
2009-10 (without retests)	24	0	15	-1	18	+3
2009-10 (with retests)	19	-5	12	-4	15	0



## Trends within Subgroups

# Algebra I

Year	African-American vs. White		Hispanic vs. White		Economically Disadvantaged vs. Not Economically Disadvantaged Students	
	Gap	Gap Trend	Gap	Gap Trend	Gap	Gap Trend
2006-07	35	n/a	27	n/a	24	n/a
2009-10	24	-11	15	-12	18	-6

The gaps have narrowed in each subgroup.

Trends within Subgroups  
(without retests)



# Algebra II

Year	African-American vs. White		Hispanic vs. White		Economically Disadvantaged vs. Not Economically Disadvantaged Students	
	Gap	Gap Trend	Gap	Gap Trend	Gap	Gap Trend
2007-08	31	n/a	23	n/a	21	n/a
2008-09	22	-9	19	-4	13	-8
2009-10 (without retests)	18	-4	9	-10	11	-2
2009-10 (with retests)	13	-9	7	-12	8	-5

The gaps have narrowed in each subgroup.

## Trends within Subgroups



# Algebra II

Year	African-American vs. White		Hispanic vs. White		Economically Disadvantaged vs. Not Economically Disadvantaged Students	
	Gap	Gap Trend	Gap	Gap Trend	Gap	Gap Trend
2007-08	31	n/a	23	n/a	21	n/a
2009-10	18	-13	9	-14	11	-10

The gaps have narrowed in each subgroup.

## Trends within Subgroups

# Biology

Year	African-American vs. White		Hispanic vs. White		Economically Disadvantaged vs. Not Economically Disadvantaged Students	
	Gap	Gap Trend	Gap	Gap Trend	Gap	Gap Trend
2007-08	31	n/a	23	n/a	21	n/a
2008-09	25	-6	22	-1	18	-3
2009-10 (without retests)	24	-1	21	-1	18	0
2009-10 (with retests)	19	-6	16	-6	15	-3



## Trends within Subgroups

# Biology

Year	African-American vs. White		Hispanic vs. White		Economically Disadvantaged vs. Not Economically Disadvantaged Students	
	Gap	Gap Trend	Gap	Gap Trend	Gap	Gap Trend
2007-08	31	n/a	23	n/a	21	n/a
2009-10	24	-7	21	-2	18	-3

The gaps have narrowed in each subgroup.

## Trends within Subgroups

# Civics & Economics

Year	African-American vs. White		Hispanic vs. White		Economically Disadvantaged vs. Not Economically Disadvantaged Students	
	Gap	Gap Trend	Gap	Gap Trend	Gap	Gap Trend
2007-08	31	n/a	23	n/a	21	n/a
2008-09	25	-6	24	+1	21	0
2009-10 (without retests)	24	-1	22	-2	20	-1
2009-10 (with retests)	19	-6	18	-6	17	-4

The gaps have narrowed in each subgroup.

## Trends within Subgroups



# Civics & Economics

Year	African-American vs. White		Hispanic vs. White		Economically Disadvantaged vs. Not Economically Disadvantaged Students	
	Gap	Gap Trend	Gap	Gap Trend	Gap	Gap Trend
2007-08	31	n/a	23	n/a	21	n/a
2009-10	24	-7	22	-1	20	-1

The gaps have narrowed in each subgroup.

## Trends within Subgroups

# English I

Year	African-American vs. White		Hispanic vs. White		Economically Disadvantaged vs. Not Economically Disadvantaged Students	
	Gap	Gap Trend	Gap	Gap Trend	Gap	Gap Trend
2006-07	32	n/a	36	n/a	29	n/a
2007-08	30	-2	33	-3	24	-5
2008-09	26	-4	25	-8	22	-2
2009-10 (without retests)	22	-4	22	-3	20	-2
2009-10 (with retests)	16	-10	18	-7	16	-6

The gaps have narrowed in each subgroup.

## Trends within Subgroups

# English I

Year	African-American vs. White		Hispanic vs. White		Economically Disadvantaged vs. Not Economically Disadvantaged Students	
	Gap	Gap Trend	Gap	Gap Trend	Gap	Gap Trend
2006-07	32	n/a	36	n/a	29	n/a
2009-10	22	-10	22	-14	20	-9

The gaps have narrowed in each subgroup.

## Trends within Subgroups



# Geometry

Year	African-American vs. White		Hispanic vs. White		Economically Disadvantaged vs. Not Economically Disadvantaged Students	
	Gap	Gap Trend	Gap	Gap Trend	Gap	Gap Trend
2007-08	31	n/a	23	n/a	21	n/a
2008-09	25	-6	15	-8	12	-9
2009-10 (without retests)	24	-1	14	-1	16	+4
2009-10 (with retests)	19	-6	12	-3	14	+2

CMS ethnic gaps have narrowed.

## Trends within Subgroups



# Geometry

Year	African-American vs. White		Hispanic vs. White		Economically Disadvantaged vs. Not Economically Disadvantaged Students	
	Gap	Gap Trend	Gap	Gap Trend	Gap	Gap Trend
2007-08	31	n/a	23	n/a	21	n/a
2009-10	24	-7	14	-9	16	-5

The gaps have narrowed in each subgroup.

## Trends within Subgroups

# Physical Science

Year	African-American vs. White		Hispanic vs. White		Economically Disadvantaged vs. Not Economically Disadvantaged Students	
	Gap	Gap Trend	Gap	Gap Trend	Gap	Gap Trend
2007-08	31	n/a	23	n/a	21	n/a
2008-09	25	-6	24	+1	10	-9
2009-10 (without retests)	21	-4	17	-7	13	+3
2009-10 (with retests)	18	-7	15	-9	12	+2

CMS ethnic gaps have narrowed.

## Trends within Subgroups

# Physical Science

Year	African-American vs. White		Hispanic vs. White		Economically Disadvantaged vs. Not Economically Disadvantaged Students	
	Gap	Gap Trend	Gap	Gap Trend	Gap	Gap Trend
2007-08	31	n/a	23	n/a	21	n/a
2009-10	21	-10	17	-6	13	-8

The gaps have narrowed in each subgroup.

## Trends within Subgroups

# US History

Year	African-American vs. White		Hispanic vs. White		Economically Disadvantaged vs. Not Economically Disadvantaged Students	
	Gap	Gap Trend	Gap	Gap Trend	Gap	Gap Trend
2005-06	39	n/a	27	n/a	31	n/a
2006-07	33	-6	27	0	26	-5
2007-08	26	-7	19	-8	20	-6
2008-09	24	-2	19	0	20	0
2009-10 (without retests)	18	-6	13	-6	13	-7
2009-10 (with retests)	14	-10	11	-8	10	-10

The gaps have narrowed in each subgroup.

## Trends within Subgroups

# US History

Year	African-American vs. White		Hispanic vs. White		Economically Disadvantaged vs. Not Economically Disadvantaged Students	
	Gap	Gap Trend	Gap	Gap Trend	Gap	Gap Trend
2005-06	39	n/a	27	n/a	31	n/a
2009-10	18	-21	13	-14	13	-18

The gaps have narrowed in each subgroup.

## Trends within Subgroups

# High Schools Meeting Strategic Plan 2010 EOC Composite Goals (80%)

Ardrey Kell	Independence	Olympic Int'l Studies & Global Econ.
Cato Middle College	Mallard Creek	Olympic METS
David W. Butler	Myers Park	Olympic Renaissance
East Mecklenburg	North Mecklenburg	Performance Learning Center
Garinger International Studies	Northwest School of the Arts	Phillip O. Berry Academy of Technology
Garinger New Technology	Olympic Biotech, Health & Pub. Admin.	Providence
Harding University	Olympic Int'l Bus & Comm. Studies	South Mecklenburg



## 2010 End-of-Course Results (with retests)

- There was some closing of the gap for most EOCs. The exception is with Economically Disadvantaged students in Biology and Geometry.
- More work needs to be done with Algebra I, Geometry and Physical Science.



Achievement Gap

# Writing Preliminary Assessment Results



2009-2010





## General Writing Assessment:

- Only at Grade 10
- Students respond to a prompt
- The writing scale range: 4-20
- Students who score 12 or better are considered to be proficient
- Used as the 10<sup>th</sup> grade Reading test for AYP

## Achievement Levels:

- Level III – grade level (scores of 12-16)
- Level IV – above grade level (scores of 17-20)



# NC General Writing Assessment

## Writing results for Grade 10

- Increased 1 percentage point from last year
- CMS rate is 6 percentage points higher than the state rate
- The state rate decreased 1 percentage point from last year



2010 Writing Results

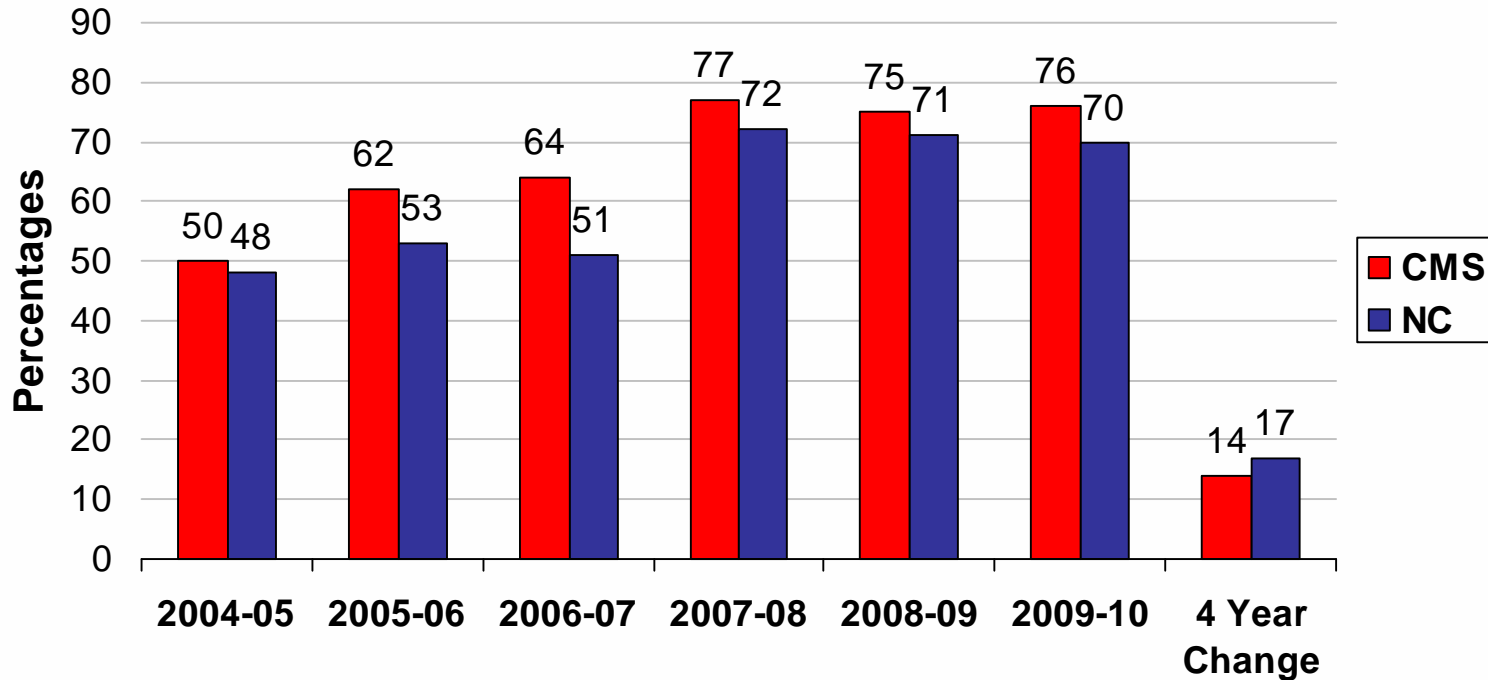
# Writing Proficiency

Grade	2004-05	2005-06	2006-07	2007-08	2008-09	2009-10	Change
10	50	62	64	77	75	76	+26

CMS increased proficiency by 26 percentage points over the past 5 years.

## 2010 Writing Results

# Writing Proficiency CMS compared to NC



Writing Results

Year	African-American vs. White		Hispanic vs. White		Economically Disadvantaged vs. Not Economically Disadvantaged Students	
	Gap	Gap Trend	Gap	Gap Trend	Gap	Gap Trend
2005-06	34	n/a	37	n/a	30	n/a
2006-07	29	-5	40	+3	29	-1
2007-08	23	-6	27	-13	21	-8
2008-09	23	0	27	0	20	-1
2009-10	23	0	23	-4	20	0



# Writing Gap Trends (overall)



	African-American vs. White		Hispanic vs. White		Economically Disadvantaged vs. Not Economically Disadvantaged Students	
Year	Gap	Gap Trend	Gap	Gap Trend	Gap	Gap Trend
2005-06	34	n/a	37	n/a	30	n/a
2009-10	23	-11	23	-14	20	-10

# Writing Gap Trends (without retests)

# Schools Meeting Strategic Plan 2010 Writing Goals (Writing - 80%)

Ardrey Kell	Olympic METS
David W. Butler	Olympic Int'l Studies & Global Econ.
Garinger New Technology	Olympic Renaissance
Harding University	Phillip O. Berry Academy of Tech.
M. G. Davis Military Academy	Providence
Metro	South Mecklenburg
Northwest School of the Arts	



# 2010 Writing Results

# Strategic Staffing & Focus High Schools Preliminary Assessment Results



2009-2010





	2007-08 MA	2008-09 MA (without retests)	2008-09 MA (with retests)	2009-10 MA (without retests)	2009-10 MA (with retests)
Briarwood ES	46	43	57	57	66
Bruns Avenue ES	44	49	57	53	62
Devonshire ES	54	70	77	75	82
Ranson MS	39	56	64	56	65
Reid Park ES	31	37	47	48	62
Sterling ES	52	76	84	73	82
Westerly Hills ES	42	47	55	57	66



# Cohort I Strategic Staffing Schools Math Proficiency (overall)

	2007-08 MA	2008-09 MA	2009-10 MA	Change
<b>Briarwood ES</b>	46	43	57	+11
<b>Bruns Avenue ES</b>	44	49	53	+9
<b>Devonshire ES</b>	54	70	75	+21
<b>Ranson MS</b>	39	56	56	+17
<b>Reid Park ES</b>	31	37	48	+17
<b>Sterling ES</b>	52	76	73	+21
<b>Westerly Hills ES</b>	42	47	57	+15



# Cohort I Strategic Staffing Schools Math Proficiency (without retests)

	2007-08 RD	2008-09 RD (without retests)	2008-09 RD (with retests)	2009-10 RD (without retests)	2009-10 RD (with retests)
<b>Briarwood ES</b>	32	34	42	39	50
<b>Bruns Avenue ES</b>	19	29	36	30	42
<b>Devonshire ES</b>	34	43	55	44	55
<b>Ranson MS</b>	32	37	49	42	51
<b>Reid Park ES</b>	23	25	35	24	34
<b>Sterling ES</b>	35	48	59	55	66
<b>Westerly Hills ES</b>	32	34	44	33	48



# Cohort I Strategic Staffing Schools Reading Proficiency (overall)

	2007-08 RD	2008-09 RD	2009-10 RD	Change
<b>Briarwood ES</b>	32	34	39	<b>+7</b>
<b>Bruns Avenue ES</b>	19	29	30	<b>+11</b>
<b>Devonshire ES</b>	34	43	44	<b>+10</b>
<b>Ranson MS</b>	32	37	42	<b>+10</b>
<b>Reid Park ES</b>	23	25	24	<b>+1</b>
<b>Sterling ES</b>	35	48	55	<b>+20</b>
<b>Westerly Hills ES</b>	32	34	33	<b>+1</b>



# Cohort I Strategic Staffing Schools Reading Proficiency (without retests)

	2007-08 SCI	2008-09 SCI (without retests)	2008-09 SCI (with retests)	2009-10 SCI (without retests)	2009-10 SCI (with retests)
Briarwood ES	10	25	34	32	43
Bruns Avenue ES	<5	15	22	18	27
Devonshire ES	25	46	51	70	82
Ranson MS	21	25	32	44	58
Reid Park ES	<5	14	18	15	23
Sterling ES	20	23	25	7	39
Westerly Hills ES	12	8	25	44	51



# Cohort I Strategic Staffing Schools Science Proficiency (overall)

	2007-08 SCI	2008-09 SCI	2009-10 SCI	Change
<b>Briarwood ES</b>	10	25	32	<b>+22</b>
<b>Bruns Avenue ES</b>	<5	15	18	<b>+17</b>
<b>Devonshire ES</b>	25	46	70	<b>+45</b>
<b>Ranson MS</b>	21	25	44	<b>+23</b>
<b>Reid Park ES</b>	<5	14	15	<b>+13</b>
<b>Sterling ES</b>	20	23	7	<b>-13</b>
<b>Westerly Hills ES</b>	12	8	44	<b>+32</b>



# Cohort I Strategic Staffing Schools Science Proficiency (without retests)

	2007-08 MA	2008-09 MA (without retests)	2008-09 MA (with retests)	2009-10 MA (without retests)	2009-10 MA (with retests)
<b>Albemarle Road MS</b>	48	58	67	65	76
<b>Allenbrook ES</b>	54	48	56	55	67
<b>Ashley Park ES</b>	34	37	52	59	67
<b>Bishop Spaugh MS</b>	24	29	37	42	54
<b>Druid Hills ES</b>	40	54	63	46	55
<b>Paw Creek ES</b>	57	63	70	67	74
<b>Thomasboro ES</b>	35	44	52	58	69



# Cohort 2 Strategic Staffing Schools Math Proficiency

	2007-08 RD	2008-09 RD (without retests)	2008-09 RD (with retests)	2009-10 RD (without retests)	2009-10 RD (with retests)
<b>Albemarle Road MS</b>	34	43	53	47	56
<b>Allenbrook ES</b>	31	28	32	34	46
<b>Ashley Park ES</b>	25	28	37	37	49
<b>Bishop Spaugh MS</b>	18	21	28	28	36
<b>Druid Hills ES</b>	24	28	39	30	42
<b>Paw Creek ES</b>	48	48	60	50	62
<b>Thomasboro ES</b>	24	24	36	35	44



# Cohort 2 Strategic Staffing Schools Reading Proficiency



	2007-08 SCI	2008-09 SCI (without retests)	2008-09 SCI (with retests)	2009-10 SCI (without retests)	2009-10 SCI (with retests)
Albemarle Road MS	29	50	62	56	67
Allenbrook ES	11	10	20	27	36
Ashley Park ES	<5	10	21	48	63
Bishop Spaugh MS	12	17	26	28	37
Druid Hills ES	10	6	9	9	19
Paw Creek ES	32	34	42	59	65
Thomasboro ES	9	7	10	<5	27



# Cohort 2 Strategic Staffing Schools Science Proficiency

	EOC Composite						Change (without retests)	Change (with retests)
	2005- 06	2006- 07	2007- 08	2008- 09	2009-10 (without retests)	2009-10 (with retests)		
East Mecklenburg	64	67	70	75	78	84	+14	+20
E. E. Waddell*	50	48	56	59	64	71	+14	+21
Garinger Business & Finance	n/a	n/a	34	45	68	77	+34	+43
Garinger International Studies	n/a	64	46	80	88	92	+24	+28
Garinger Leadership & Public Svc	n/a	n/a	30	37	68	74	+38	+44
Garinger Math & Science	n/a	n/a	46	48	64	71	+18	+25
Garinger New Technology	n/a	83	73	81	88	>95	+5	+13
Harding University	54	61	66	66	78	87	+24	+33
Independence	63	71	74	77	84	89	+21	+26
Olympic Biotech, Health & Pub Admin	n/a	51	57	69	83	90	+32	+39
Olympic Int'l Bus & Comm. Studies	n/a	47	45	60	72	83	+25	+36
Olympic Int'l Studies & Global Econ	n/a	40	53	74	73	81	+33	+41
Olympic METS	n/a	55	62	77	84	90	+29	+35
Olympic Renaissance	n/a	48	49	61	85	91	+37	+43
Phillip O. Berry Academy	51	56	57	75	84	89	+33	+38
Vance	61	62	56	67	63	72	+2	+11
West Charlotte*	40	45	59	68	68	72	+28	+32
West Mecklenburg*	48	52	58	73	65	74	+17	+26



# FOCUS High Schools EOC Composite

# Growth, Progress & Graduation Rate Preliminary Assessment Results



2009-2010



Goal/ Objective	Description	2006-07 Level	2007-08 Level	2008-09 Level	2009-10 Level
1/1	ABCs Average Growth Total (all tests)	81.2	80.9	82.5	83.1
1/2	ABCs Reading Growth Average	79.7	80.4	80.8	81.6
1/3	ABCs Math Growth Average	81.6	82.9	83.9	84.4
1/6A	ABCs EOC Growth Average	82.5	79.5	82.8	83.3
1/6B	ABCs English I Growth Average	82.9	81.7	83.0	83.2
1/6C	ABCs Algebra I Growth Average	80.1	79.7	84.2	84.2
1/7A1	Growth for African American students (closing of gap)	79.6	79.8	81.5	82.4
1/7A2	Growth for Hispanic students (closing of gap)	81.3	81.2	82.7	83.4
1/7B	Growth for economically disadvantaged students (closing of gap)	79.8	80.2	81.7	82.7



# Growth Data

Test	Change (without retest)	Change (with retest)
Math 3	+3	+2
Math 4	+2	+3
Math 5	+2	+2
Math 6	+4	+3
Math 7	+3	+4
Math 8	+6	+4
Reading 3	+1	+2
Reading 4	+1	+1
Reading 5	+3	+3
Reading 6	+4	+4
Reading 7	+3	+3
Reading 8	+4	+3
Science 5	+8	+9
Science 8	+6	+6

Test	Change (without retest)	Change (with retest)
Algebra I	+3	+8
Algebra II	+2	+9
Biology	+0.2	+6
Civics	+1	+6
English I	+4	+9
Geometry	+4	+10
Physical Science	+3	+10
US History	+5	+10
Writing	+1	n/a



Progress was made in 23 of 23 subjects

Graduation Year	Rate	Notes
2004-05	92.9	Old method
2005-06	74.6	Incorrect data
2006-07	73.8	Incorrect data
2007-08	66.6	First solid rate
2008-09	66.1	
2009-10	69.9	



# Graduation Rate

# AYP Preliminary Assessment Results



2009-2010



	2007	2008 – 2010	2011	2014
Grades 3 – 8 Reading	76.7%	43.2%	71.6%	100%
Grades 3 – 8 Math	65.8%	77.2%	88.6%	100%
Grade 10 Reading	35.4%	38.5%	69.3%	100%
Grade 10 Math	70.8%	68.4%	84.2%	100%



Note the targets for the 2009-10 school year were not modified to take retests into account

# AYP Target Goals



**2006-07 AYP:** 61 out of 151 schools - 40.4%

**2007-08 AYP:** 31 out of 158 schools - 19.6%

**2008-09 AYP:** 111 out of 163 schools - 68.1%

2008-09 ESTIMATED AYP (without retests): 59 out of 163 - 36.2%

**2009-10 AYP:** 97 out of 168 schools - 57.7%

Note, the use of retests in calculating AYP for the 2008-09 school year caused many schools to meet the safe harbor provision of the law.

Estimated results only use the total school group and as a result may over estimate the number of schools meeting AYP



# AYP Results

## Schools that made AYP

Albemarle Road MS	Community House MS	Hidden Valley ES
Alexander Graham MS	Cornelius ES	Highland Creek ES
Allenbrook ES	Cotswold ES	Highland Mills ES
Ashley Park ES	Crestdale MS	Huntersville ES
Bain ES	Croft Community ES	Idlewild ES
Ballantyne ES	Crown Point ES	J. H. Gunn ES
Barnette ES	Davidson ES	J. V. Washam ES
Berewick ES	Davidson IB MS	Jay M. Robinson MS
Phillip O. Berry Tech HS	Devonshire ES	Joseph W. Grier Academy
Berryhill ES	Eastover ES	Lake Wylie ES
Beverly Woods ES	Elizabeth Lane ES	Lincoln Heights ES
Briarwood ES	Elizabeth Traditional ES	Long Creek ES
Butler HS	Elon Park ES	Mallard Creek HS
Carmel MS	Endhaven ES	Mallard Creek ES
Chantilly ES	Greenway Park ES	M. G. Davis Military Academy
Clear Creek ES	Harding University HS	Matthews ES
Collinswood ES	Hawk Ridge ES	McAlpine ES



## Schools that made AYP (continued)

McKee Road ES	Piedmont Open MS	Steele Creek ES
Metro	Piney Grove ES	Sterling ES
Mint Hill MS	Polo Ridge ES	Stoney Creek ES
Montclair ES	Providence Springs ES	Thomasboro ES
Morehead ES	Providence HS	Torrence Creek ES
Morgan	Randolph MS	Tuckaseegee ES
Mountain Island ES	River Gate ES	University Park ES
Myers Park Traditional ES	South Charlotte MS	Villa Heights ES
Nations Ford ES	South Mecklenburg HS	Westerly Hills ES
Newell ES	Selwyn ES	Whitewater ES
Oakdale ES	Shamrock Gardens ES	Winding Springs ES
Oaklawn ES	Sharon ES	Windsor Park ES
Olde Providence ES	Smith Language Academy	Winget Park ES
Olympic METS HS	Smithfield ES	Winterfield ES
Park Road ES	Bishop Spaugh MS	
Paw Creek ES	Statesville Road ES	



## Schools that made 95 - 99.9% of AYP targets

Ardrey Kell HS	J. M. Alexander MS	Pineville ES
Bailey MS	Kennedy MS	Rama Road ES
Blythe ES	Lansdowne ES	Southwest MS
Bradley MS	Lebanon Rd ES	Wilson MS
Hickory Grove ES	Merry Oaks ES	
Hornets Nest ES	Nathaniel Alexander ES	

## Schools that made 90 - 94.9% of AYP targets

Cochrane MS	Oakhurst ES
Dilworth ES	Olympic Biotech HS
Northeast MS	Quail Hollow MS
Northwest School of the Arts	

## Schools with the lowest # of target goals

Hawthorne HS - 5
Olympic International Studies & Global Economics - 5

## Schools with the highest # of target goals

Community House MS - 37
Mint Hill MS - 37
Randolph MS - 37
Southwest MS - 37



# AYP Results

# Career & Technical Education: VoCATS Preliminary Assessment Results



2009-2010



# Perkins IV

- 2006 Reauthorized
- 2008-2009: New baseline established
  - 79.9%: CMS actual composite scores
- 2009 – 2010
  - NCDPI Goal for CMS – 80.4 %  
Inclusion of 3<sup>rd</sup> party assessments



CMS 2010 Goal

## Preliminary results:

- Over 36,000 CTE high school students were assessed.

## 91 CTE courses:

- 71 courses: DPI / 3<sup>rd</sup> Party provided
- 20 courses: CMS provided



2009-2010  
CTE VoCATS Assessments

## CTE results

- CMS CTE overall  
73.8%
- 7 high schools met or exceeded the school's DPI - CTE Perkins IV new goal.

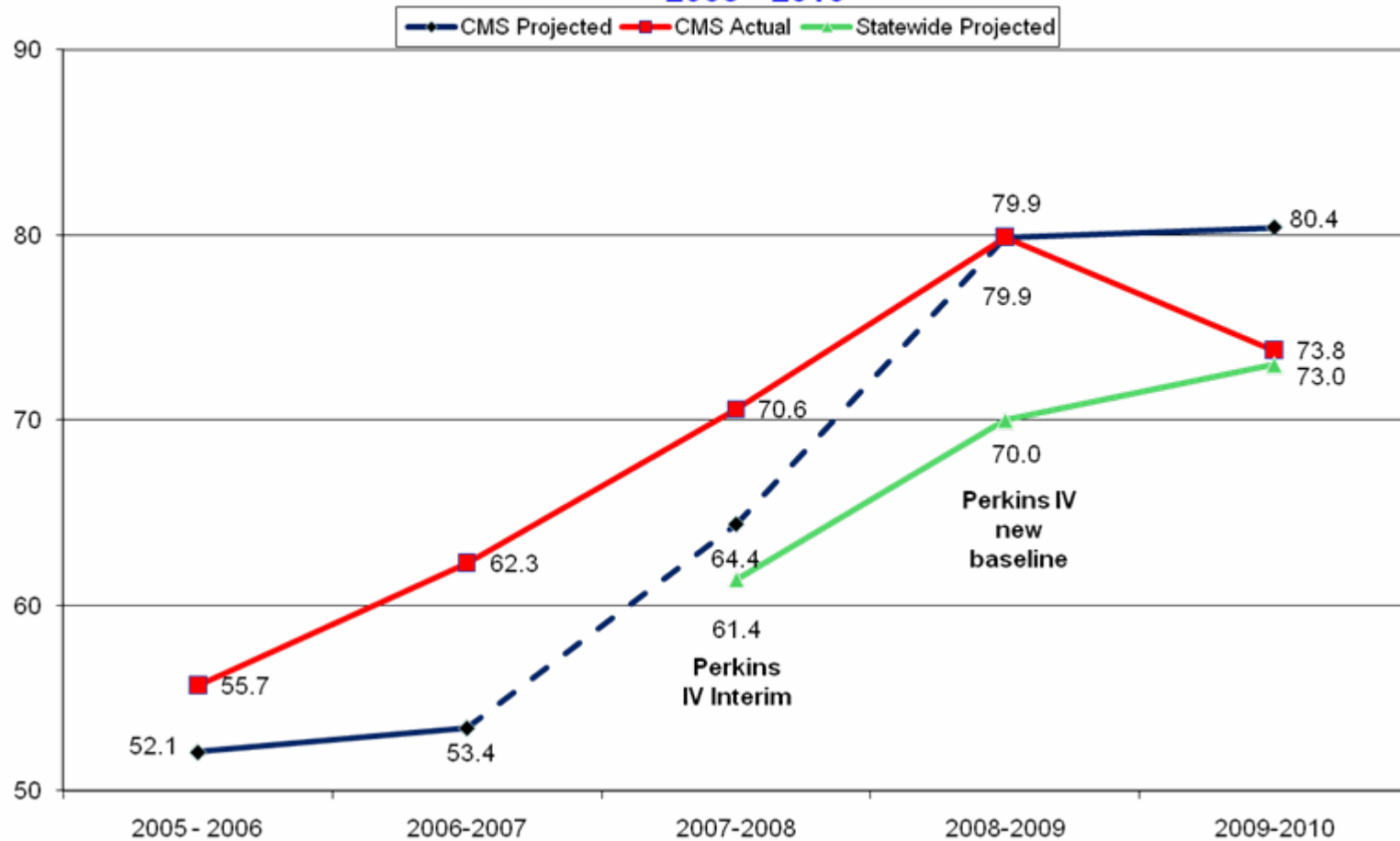


2009-2010  
CTE VoCATS Assessments



# Charlotte-Mecklenburg Schools Career and Technical Education

## VoCATS Results 2005 - 2010



# CTE VoCATS Assessments

Lines indicate:

LPS Goal for 2010 = 80.4%

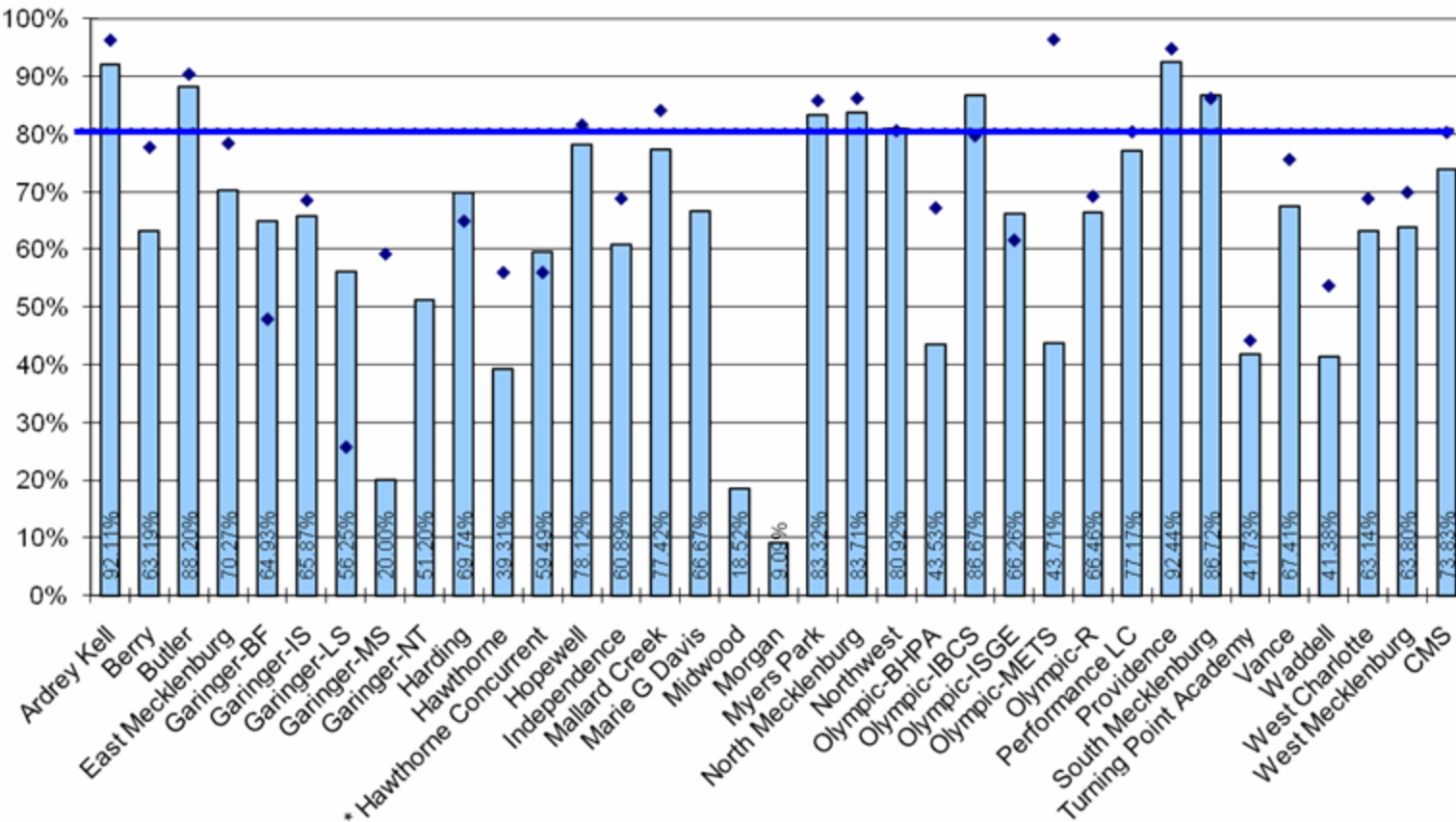
District 2010 Goal = 80%

# Charlotte-Mecklenburg Schools Career and Technical Education

## VoCATS Results 2009 - 2010

■ CMS Proficient  
◆ LPS Goal

Preliminary data - # tested



# CTE VoCATS Assessments

Percent Proficient	
2005-06	55.7
2006-07	62.3
2007-08	70.6
2008-09	79.9
2009-10	73.8



\*Some tests were not given each year

# CMS VoCATS Trend